

# POLY PROFILES



**Polyengineering, Inc.**  
Architecture. Engineering. Solutions.

[www.polyengineering.com](http://www.polyengineering.com)

May 2005

## Henry County Water Authority



Jeff Jones, P.E.  
Senior Civil Engineer

Since 1976 Polyengineering, has worked hand in hand with the Henry County Commission and the Henry County Water Authority to establish a county wide water system serving the rural areas of Henry County. Inspired by the vision of HCWA's first board of directors, supported by the probate judge and county commission Henry County broke ground on the first phase of the Henry County Water System in 1981 initially serving 600 customers in the Screamer Area Northeast of Abbeville and 60 customers along Highway 134 West of Headland.

Phase I was followed the next year by Phase 2 serving 160 customers in and around Tumbleton and a merger with the Shorterville Water Authority and its 110 customers. After 10 years of establishing its customers base the Water Authority and County Commission began in the early 90's working together using CDBG Grants, USDA RD Loans and Grants and mergers with smaller systems to aggressively expand the county system.

The Henry County Water System, now completing Phase 8 of its long range improvements program, serves well over 3,000 customers, has four deep

wells with a fifth soon to be online, five water tanks, 360 miles of water mains, and interconnections with Abbeville, Headland, Newville, Bakerhill, Dale County, Wills Cross Roads, and Columbia. See map on back.

Since 1980 the Henry County Water Authority has received grants from USDA Rural Development and its predecessor agency the Farmers Home Administration totaling \$2,207,000 and CDBG Grants from the Alabama Department of Economic and Community Affairs totaling \$1,400,000. The CDBG Grants were sponsored by the Henry County Commission.

The Henry County Water System is one of the true rural water success stories in Alabama. Polyengineering is pleased to have served as consulting engineer for the system since its inception.



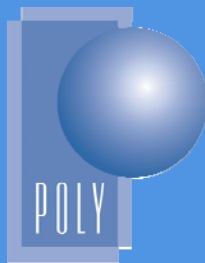
Above: 150,000 Gallon Elevated Water Storage Tank and 400 GPM Well in Shorterville Constructed in Phase 7

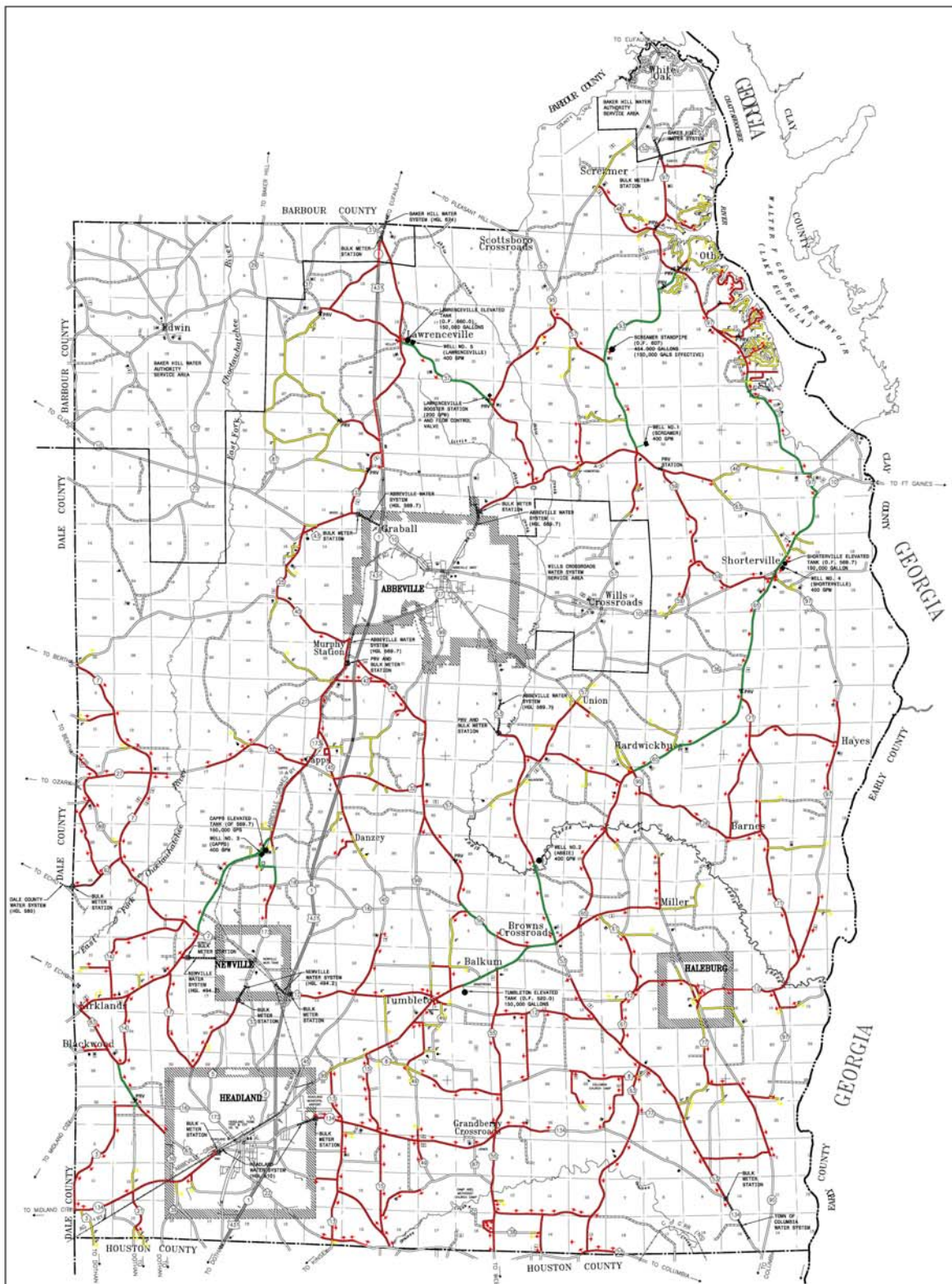


Above- Henry County's Well No. 5 currently under construction next to the Lawrenceville Tank will be the first well in Henry County to be developed in the Tuscaloosa Formation. Well No. 5 has a total depth of 2,470 feet and is scheduled to begin production in July 2005



Above: Henry County Water Authority Office Building on the square in Abbeville designed by POLY and completed in 2004. Below-(L-R) Mark Tye, HCWA Superintendent, Harold Robison, HCWA Field Superintendent; Joel Roberts, POLY Inspector; and Jeff Jones inspect HCWA's recently completed Shorterville Well.





# HENRY COUNTY WATER SYSTEM

HENRY COUNTY WATER AUTHORITY  
HENRY COUNTY, ALABAMA  
JULY 2004

**LEGEND**

- EXISTING 8" W.M.
- EXISTING 6" W.M.
- EXISTING 3" W.M.
- EXISTING 2" W.M.
- + EXISTING F.H.
- P.R.V. P.R.V. (PRESSURE REDUCING VALVE)
- B.M.S. BULK METER STATION
- T.W. TANK, WELL OR COMBINATION



**POLYENGINEERING, INC.**  
ARCHITECTURE. ENGINEERING. SOLUTIONS.  
Post Office Box 837 (36302)  
1935 HEADLAND AVENUE  
DOTHAN, ALABAMA 36303  
334-793-4700  
WWW.POLYENGINEERING.COM

